



Owner's Handbook

CM8501D-GS

Espresso Coffee Maker

IMPORTANT SAFETY INSTRUCTIONS	1	OPERATION	8
CONTROLS AND FEATURES.....	4	First use or after storage.....	8
UNPACKING.....	5	Removable drip tray.....	8
INTRODUCTION.....	5	Filling the water tank.....	8
PLACEMENT	5	Pre-heating the coffee maker	9
Placement cautions	5	Making espresso coffee.....	10
CHOOSING COFFEE.....	5	Making another cup of espresso coffee	10
CARE & CLEANING	6	Foaming milk.....	11
Filter holder and filters.....	6	Auto Standby.....	12
Water tank, drip tray	6	After use.....	12
Body.....	6	SPECIFICATIONS.....	12
Storage.....	6	TROUBLESHOOTING	12
DE-SCALING	6	No power	12
ASSEMBLY	7	Water leaks from the base of the coffee maker.....	12
Fitting a filter.....	7	Water leaks from the filter holder.....	12
Fitting the filter holder into the coffee maker	7	No steam for frothing.....	12
		WARRANTY.....	13

Please keep your sales docket, including cash register receipt, in a safe place as the docket will prove the commencement of the period of this warranty. If you wish to make a claim specifically under this manufacturer's warranty, you will be required to provide proof of purchase, preferably your sales docket.

IMPORTANT SAFETY INSTRUCTIONS

Please read these instructions carefully before using the appliance for the first time.

- Always use the appliance from a power outlet of the same voltage (A.C. only) marked on the appliance.
- This appliance plug includes an earthed pin and must be used with a power outlet with earthed connection.
- Always turn the power off at the power outlet before you insert or remove a plug. Remove by grasping the plug - do not pull on the cord.
- Turn the power off and remove the plug when the appliance is not in use and before cleaning.
- Do not use the appliance with an extension power board.
- For additional protection, it is recommended to use the appliance with a residual current device (safety switch) with a tripping current not exceeding 30mA in the power socket which supply power to the appliance.
- If the supply cord is damaged, it must be replaced by the manufacturer or its service agent or a similarly qualified person in order to avoid a hazard.
- The appliance shall not be operated by means of an external timer or separate remote control system.
- Always operate the appliance on a flat, level surface.
- Do not let the power cord of the appliance hang over the edge of a table or bench top or touch any hot surface.
- Do not leave the power cord near the edge of a bench top where children may touch or pull it.

IMPORTANT SAFETY INSTRUCTIONS

- Do not operate the appliance when empty.
- Never fill the water tank above the 'MAX' maximum mark.
- The water tank should be filled only with cold water.
- Do not place the appliance on or near a hot gas flame, electric element or on a heated oven. Do not place on top of any other appliance.
- Do not leave the hot appliance near or where children may touch it.
- This appliance is not suitable for use by persons (including children) who have limited physical, sensory or mental abilities, or by persons who have a lack of experience and/or lack of knowledge unless they are supervised by a person in charge for their security or receive instructions by them on how to use the coffee maker.
- Children should be supervised to ensure they do not play with the appliance
- **CAUTION:** Do not move the appliance while switched on.
- Never leave the appliance unattended while in use.
- Do not use the appliance for any purposes other than for making coffee and/or frothing milk.
- Do not use the coffee maker outdoors.
- Never remove the filter holder while coffee is being made.
- When frothing milk use a heatproof cup or jug with a handle. Fill it no more than 1/3 full. Do not overfill.
- Always ensure that a cup or jug is held securely under the steam outlet before opening the steam valve.

IMPORTANT SAFETY INSTRUCTIONS

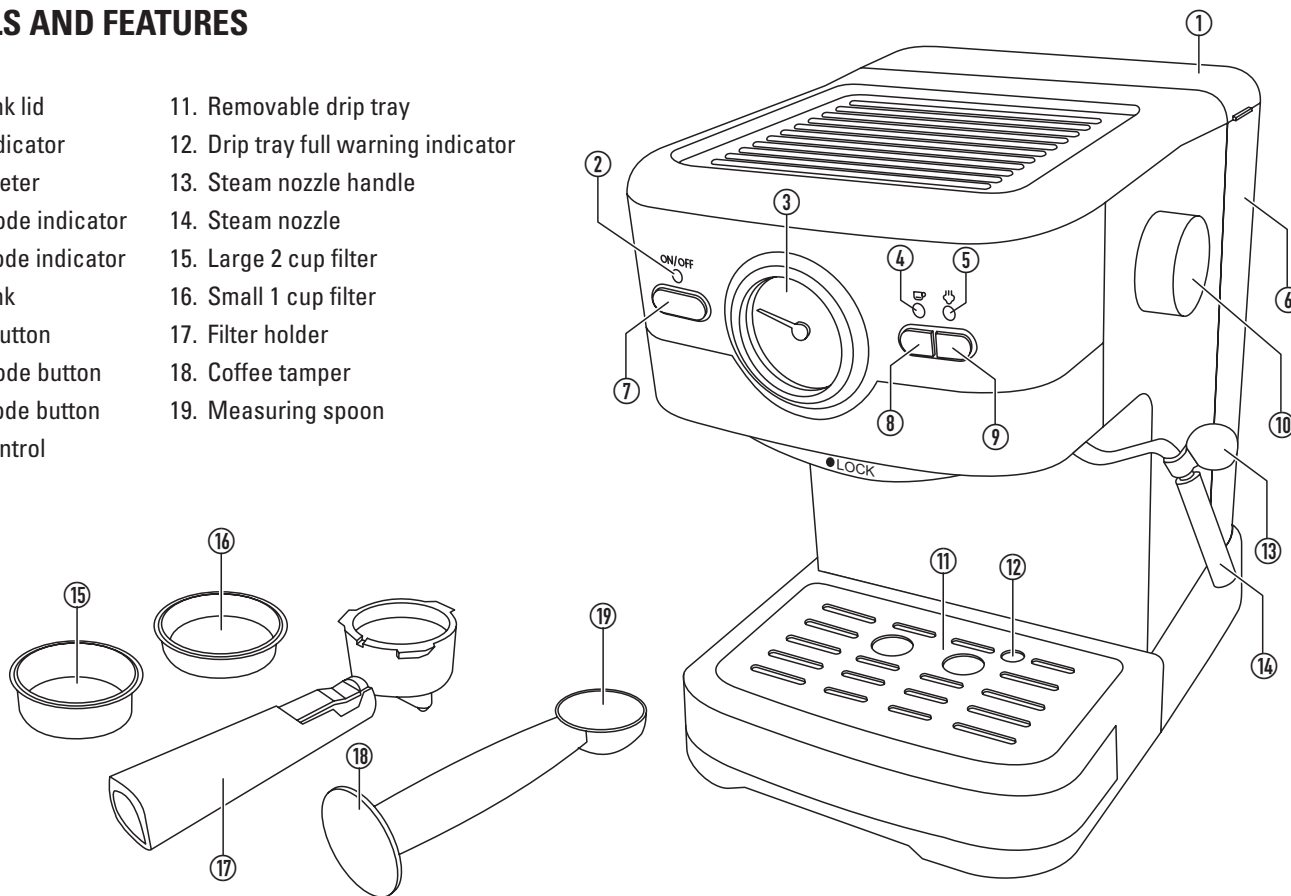
- When operating the steam function, make sure the steam has completely subsided before switching the appliance off.
- Do not immerse the appliance in water or any other liquid.
- Use of attachments or accessories not recommended or sold with the appliance may cause personal hazards, injuries or property damage.
- **CAUTION:** Accessible surfaces of this appliance may be hot during use.
- Do not operate any appliance with a damaged cord or plug or after the appliance malfunctions or is dropped or damaged in any manner. Return the appliance to the nearest authorised service facility for examination, repair or electrical or mechanical adjustment.
- **CAUTION:** To prevent damage to the appliance do not use alkaline cleaning agents when cleaning, use a soft cloth and mild detergent.
- This appliance is intended to be used in household and similar applications such as :
 - Staff kitchen areas in shops, offices and other working environments;
 - Farm houses;
 - By clients in hotels, motels and other residential type environments;
 - Bed and breakfast type environments.



CAUTION, Hot surface. The surface can be hot and should not be touched without taking care.

CONTROLS AND FEATURES

- | | |
|--------------------------|--------------------------------------|
| 1. Water tank lid | 11. Removable drip tray |
| 2. Power indicator | 12. Drip tray full warning indicator |
| 3. Thermometer | 13. Steam nozzle handle |
| 4. Coffee mode indicator | 14. Steam nozzle |
| 5. Steam mode indicator | 15. Large 2 cup filter |
| 6. Water tank | 16. Small 1 cup filter |
| 7. ON/OFF button | 17. Filter holder |
| 8. Coffee mode button | 18. Coffee tamper |
| 9. Steam mode button | 19. Measuring spoon |
| 10. Steam control | |



UNPACKING

Unpack the coffee maker from the carton.

Retain the carton and packing for future use. If you have to dispose of the carton and packing, please do so responsibly.

The carton should contain -

1 x CM8501D-GS coffee maker.

1 x Filter holder.

1 x Small 1 cup filter.

1 x Large 2 cup filter.

1 x Measuring spoon.

1 x Owner's handbook.

INTRODUCTION

The coffee maker will make espresso coffee from ground coffee.

The coffee maker will also generate pressurised steam to foam milk for cappuccino drinks etc.

PLACEMENT

CAUTION: When lifting or moving the coffee maker, ensure that it is fully supported at the back of the appliance. The front drip tray section is detachable and must not be used to lift the appliance.

- Place the coffee maker securely on a table or work-surface within easy reach of a power outlet.

Placement cautions

Ensure that the appliance is located out of the reach of children.

CHOOSING COFFEE

Purchase ground coffee suitable for espresso makers or percolators or beans that you can grind. The coffee type and strength can be varied according to taste.

The size of the coffee 'shot' can be varied by pouring more or less water during the coffee making process.

Some experimentation with coffee types and the size of the shot poured will be necessary to prepare coffee exactly to your liking.

CARE & CLEANING

Disconnect the coffee maker from mains power and ensure it has cooled before cleaning.

Never immerse the body of the coffee maker when cleaning.

Never clean the coffee maker with scourers, abrasive pads or chemicals.

Filter holder and filters

- Empty all coffee grinds from the filter.
- Align the filter for fitting or removal as shown on page 7.
- Lift the filter out of the holder.
- Hand-wash the filters and holder in a mild detergent solution.
- Rinse in clean water and allow to dry thoroughly.

Water tank, drip tray

- Hand-wash these components in a mild detergent solution.
- Rinse in clean water and allow to dry thoroughly.

Body

- Wipe the body of the coffee maker with a barely damp cloth or sponge.

Storage

- When all components are dry, store them in a clean dry area away from children and pets.

DE-SCALING

In hard water areas, lime-scale deposits may accumulate inside the coffee maker.

1. Fill the water tank to the 'MAX' mark with a suitable de-scaler, diluted with water as directed on the de-scaler instructions.
2. Fit the filter holder containing a filter. No coffee should be added.
3. Follow the instructions to pre-heat the coffee maker.
4. When the pre-heat stage has finished, follow the instructions to make two cups of fluid (2oz cups of de-scaling mixture).
5. Wait for 5 seconds.
6. Follow the instructions for foaming milk, but use an empty jug to catch the steam. Continue the steam cycle for 2 minutes.
7. Press the ON/OFF button.
8. Wait 15 minutes for the de-scaler to work.
9. Press the ON/OFF button and repeat steps 4-6 a further 3 times.
10. Continue to brew the fluid into cups until the tank is empty.
11. Empty the water tank, rinse and fill with fresh, cold water.
12. Repeat steps 4-6 at least 3 times to flush the coffee maker.

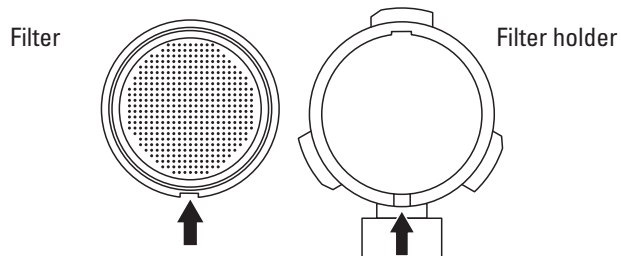
The de-scaling operation is complete.

ASSEMBLY

Fitting a filter

Small and large filter options are available for 1 cup or 2 cup servings.

- To fit one of the filters into the filter holder, align the notch on the filter with the notch on the filter holder as shown by the arrows below.

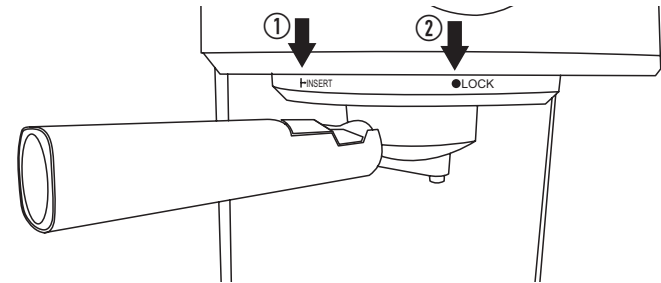


- Fit the filter into the filter holder.

Fitting the filter holder into the coffee maker

NOTE: Always fit a filter into the holder before use as described in the previous section.

- Align the filter holder handle with the 'INSERT' mark as shown. Lift the filter holder to engage the three teeth on the filter holder with the slots in the coffee maker.



- Rotate the filter holder handle firmly to the 'LOCK' position.
The filter holder is now fixed in place, ready to use.

OPERATION

First use or after storage

Before using your coffee maker for the first time or after a long storage period you should ensure that it is thoroughly cleaned internally.

- Follow the instructions in the next column to remove the water tank.
- Pull out the red transit seal from under the water tank.
- Follow the instructions for pre-heating the coffee maker.

This causes hot water to flow through all parts of the coffee maker and clean it internally before making drinks.

- When the pre-heating cycle is complete, follow the instructions to foam milk, but allowing the steam produced to flow into an empty cup.

There may be noises inside the coffee maker when generating steam for the first time. This is normal, the appliance is releasing the air inside. After about 20 seconds, the noise will stop.

- Follow the instructions in the CARE & CLEANING section to clean all the the coffee maker components.

Your coffee maker is now ready to use.

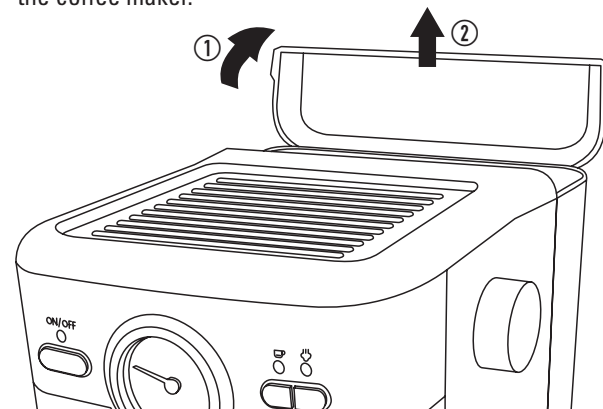
Removable drip tray

The removable drip tray will catch coffee spills that may drip when there is no cup in place under the filter holder. When the drip tray is full the red drip tray warning indicator will appear through the grid. If this occurs, lift off the drip tray and empty it.

Filling the water tank

The water tank can be lifted off the appliance for easy filling or emptying.

1. Lift the lid on the water tank.
2. Using the lid, lift the water tank upwards to remove the tank from the coffee maker.



- Fill the tank with water.

CAUTION: Ensure that the water level tank is always between the 'MIN' (minimum) and 'MAX' (maximum) marks on the tank before operating the coffee maker.

- To re-fit the tank, lower it slowly into position until the tank is securely engaged in the back of the appliance and close the lid.

OPERATION

Pre-heating the coffee maker

Pre-heating the coffee maker is recommended to ensure it is heated internally before beginning to make coffee.

- Connect the appliance to a mains outlet.
- Ensure that the water tank contains adequate water before switching on the appliance.
- Press the ON/OFF button to switch on the appliance.

The power indicator will light and the coffee mode indicator will flash as the water heats up. The water temperature will be shown by the temperature gauge.

When the water is hot enough, the coffee mode indicator will stop flashing.

NOTE: Do not fill the filter with coffee for the pre-heating stage.

- Fit a filter into the filter holder as described on the page 7.
- Fit the filter holder into the coffee maker as described on page 7.
- Place a cup under the filter holder.

Ensure that both outlets from the filter holder are positioned over the cup.

- Press the coffee mode button.

After a short delay, the heated water will start to flow into the filter holder.

- Once water starts to flow, press the coffee mode button again.

- Wait for the water to stop flowing.

The pre-heating stage is now complete. Empty the water from the cup and continue to make coffee.

OPERATION

Making espresso coffee

- Pre-heat the coffee maker as described in the previous section.
- Pre-heat your serving cup(s) for the best result.

This can be done by filling them with hot water during the pre-heat process or from a kettle.

- Ensure that the water tank contains adequate water before making coffee.
- Press the ON/OFF button to switch on the appliance.

The power indicator will light and the coffee mode indicator will flash as the water heats up.

The water temperature will be displayed by the temperature gauge.

When the water is hot enough to make coffee, the coffee mode indicator will stop flashing.

- Fit the small or large filter into the filter holder as required.
- Fill the filter with coffee using the measuring spoon.
- Press the coffee firmly into the filter with the tamping disc at the end of the spoon handle.
- Lift the filter holder into place and twist it to lock it in position.
- Place a cup under the filter holder.

Ensure that both outlets from the filter holder are positioned over the cup.

- Press the coffee mode button.

The heated water will start to flow into the filter holder. Within a few seconds coffee will begin to pour from the outlets in the filter holder.

- When you have served enough coffee, press the coffee mode button again.

The cup can now be removed for serving as black coffee or for the addition of milk or foamed milk.

Making another cup of espresso coffee

Immediately after serving a cup of coffee the coffee mode indicator will flash as the water is reheated.

- Unlock and remove the filter holder.
- Remove the used coffee grains with a small spoon.
- Check that there is adequate water in the tank, then repeat the process described in the previous section to fill the filter holder with fresh coffee and make another cup of coffee.
- Repeat this process until you have made all the cups you require.

OPERATION

Foaming milk

The coffee maker can also produce super-heated steam to foam milk for addition to coffee for cappuccino drinks etc.

Before preparing milk, use the coffee maker to make all the cups of coffee you will require.

Milk should be foamed in a separate jug. Ensure the jug is heatproof, with a handle and will fit comfortably under the steam outlet of the coffee maker. A top diameter of 70mm or greater is recommended. The milk will expand by approximately twice volume during foaming so ensure there is enough free capacity in the jug.

As an approximate guide, use 100ml of cold, whole milk for each cappuccino to be prepared.

CAUTION: Do not overfill the jug when foaming milk. The milk will expand when foaming.

- Pour cold, fresh milk into a jug for foaming.
- Check that the steam control is set to the '●' (off) position.
- Press the steam mode button.

The steam mode indicator will flash as the water is further heated.

When the steam mode indicator stops flashing, the coffee maker is ready to foam milk.

- Using the tab handle, swing the steam nozzle out to the side of the coffee maker.

Never hold the steam nozzle directly when moving it.

- Place an empty container under the steam nozzle, then slowly increase the steam control to the '☺' (maximum) position.
- Wait 10 seconds while excess water drains from the steam outlet.
- Close the steam control to the '●' (off) position.
- Hold the jug securely under the steam nozzle with the nozzle close to the bottom of the jug, under the surface of the milk.
- Rotate the steam control slowly to the '☺' (maximum) position to start the flow of steam.

Allow steam to flow through the milk until it is hot and foaming.

- Move the jug around slowly while foaming the milk.

Some experience is required to time the foaming of milk. A suitable food grade thermometer placed in the jug can help with this process.

- When you have finished foaming milk, close the steam control to the '●' (off) position and serve the milk into the prepared coffee.
- Press the coffee mode button.
- The mode indicators will flash quickly while the temperature cools.

Carefully wipe the milk deposits from the steam nozzle with a damp cloth.

CAUTION: Exercise caution when cleaning the nozzle as it will be extremely hot after use.

OPERATION

Auto Standby

The coffee maker will automatically set to standby if left powered on for more than 29 minutes.

After use

When you have finished making drinks, switch off the coffee maker and if necessary, move it to a safe place away from children and pets.

CAUTION: When lifting or moving the coffee maker, ensure that it is fully supported at the back of the appliance. The front drip tray section is detachable and must not be used to lift the appliance.

Allow the appliance to cool completely, then empty the water tank, clean the coffee from the filter and follow the instructions in the CARE & CLEANING section to clean the appliance.

SPECIFICATIONS

Power supply 220 - 240 V~, 50-60 Hz

Power consumption.....1100 W

IMPORTANT: THIS APPLIANCE MUST BE EARTHED.



E285

TROUBLESHOOTING

No power

- The power cord is not plugged in correctly.
Check that the power cord has been fully inserted into the mains outlet.

Water leaks from the base of the coffee maker

- The drip tray may be full.
Lift off the drip tray and empty it.

Water leaks from the filter holder

- Coffee may have accumulated on the rim of the filter holder.
Remove the filter holder and clean the rim.

No steam for frothing

- The steam mode indicator is off or flashing.
Press the button to select steam mode and wait for the indicator to stop flashing before frothing milk.
- The container is too big or the wrong shape.
Refer to page 11 for the correct container size.
- You have used skimmed milk.
Use whole or half-skimmed milk.

WARRANTY

1. Our goods come with guarantees that cannot be excluded under the Australian Consumer Law. You are entitled to a replacement or refund for a major failure and for compensation for any other reasonably foreseeable loss or damage. You are also entitled to have the goods repaired or replaced if the goods fail to be of acceptable quality and the failure does not amount to a major failure. Where a failure does not amount to a major failure, BIG W is entitled to choose between providing you with a repair, replacement or refund. To obtain compensation, you would need to provide documentary evidence of the loss or damage suffered, and documentary evidence that such loss or damage was a reasonably foreseeable consequence of a failure by BIG W to comply with a consumer guarantee under the Australian Consumer Law. Such evidence may include photographs, statutory declarations, receipts or reports (eg from your doctor), depending on the loss or damage.
2. In addition to all rights and remedies to which you may be entitled under the Competition and Consumer Act 2010 (Commonwealth) and any other relevant legislation, the manufacturer warrants this product to be free from defects in materials or workmanship for a period of 24 months from the date of purchase.
3. In order to claim under this warranty you will need to bring the product to any BIG W store, along with proof of purchase (typically this will be a receipt). Any cost incurred by you in bringing the product to the service desk will be borne by you. We will then, at our option, either repair or replace the product, or refund your money and take back the product – in accordance with our Returns Policy, a copy of which is available at our return desk
4. Our liability under this manufacturer's warranty is subject to us being satisfied that a defect was caused by defective workmanship or materials, and was not caused by or substantially contributed to by other factors, or circumstances beyond our control, including (but not limited to) defective installation, maintenance or repair, alteration or modification of the product in a manner not recommended by the manufacturers or any neglect, misuse or excessive use.
5. The benefits conferred by this manufacturer's warranty are in addition to all rights and remedies conveyed by the Competition and Consumer Act 2010 (Commonwealth), and any other statutory rights to which you may already be entitled, and this warranty does not exclude, restrict or modify any such rights or remedies that are implied by law.
6. This warranty is provided by BIG W of 1 Woolworths Way, Bella Vista NSW 2153, Phone: 1300 244 999.

contempo™

Made for Big W
1 Woolworths Way
Bella Vista NSW
2153 Australia

Made in China

CONTEMPO CM8501D-GS V0.3